

**Technische Information** (Irrtum vorbehalten und Haftung ausgeschlossen)

**Nr.11591 Lenzpumpe**



*d-marina-team GmbH*  
Am Voßberg 21  
23758 Oldenburg i.H.  
Tel.:04361 507800  
Fax: 04361 5078018  
[info@marina-team.de](mailto:info@marina-team.de)  
[www.marina-team.de](http://www.marina-team.de)

Gusher Titan Boden- und Wandmontage leichte, aber kraftvolle Bilge & Abwasserpumpe – bis zu 105 Liter/Minute - leicht zu installieren - selbst ansaugend - hergestellt aus korrosionssicheren Materialien - leicht zu öffnender Klemmring zu Wartungszwecken – Federunterstütztes Auslassventil ermöglicht leichtes Ansaugen - leichte Pumpe mit nur geringem Pumpwiderstand - Pumpen für Schott- oder Unterdeck-Montage

(Decksplatte im Lieferumfang)

Schlauchanschluß: 1 1/2 Zoll (38mm),

max. Ansaughöhe: 4m,

max. Pumphöhe: 4m,

Gewicht: 1,85kg

## MAINTENANCE

### Inspection:

Regular inspection of the pump is recommended. Rubber components should be replaced if worn or every three years regardless of condition.

Replacement components and service kits (AK4400 for Neoprene (clean bilge water) and AK4419 for Nitrile(oily bilge water)) are available from your local chandlery. It is recommended a service kit is kept on board.

### Winterising

At the end of the season, drain all water in the pipework and pump chamber.

### Changing the Diaphragm and Valves

1. Release screws on both sides of the clamping ring.
2. Remove clamping plate and diaphragm
3. Remove both circlips from the fulcrum pin and lever to expose the clamping bolt
4. Remove clamping bolt, noting position of the diaphragm plates.
5. Remove and replace inlet and outlet valves as illustrated in parts diagram
6. Fit new diaphragm, reassemble pump and test for correct priming and discharge

### ACCESSORIES

- DP8904 - Plastic deckplate
- AK4400 - Neoprene Spares Kit
- AK4419 - Nitrile Spares Kit
- \*SF5425 - Skinfitting
- \*SB5865 - Top entry strainer
- \*SB4222 - Side entry strainer
- \*DV5606 - 2 way diverter valve
- \*EB3488 - 90° elbow (male to female)
- \*LV1215 - In line non return valve

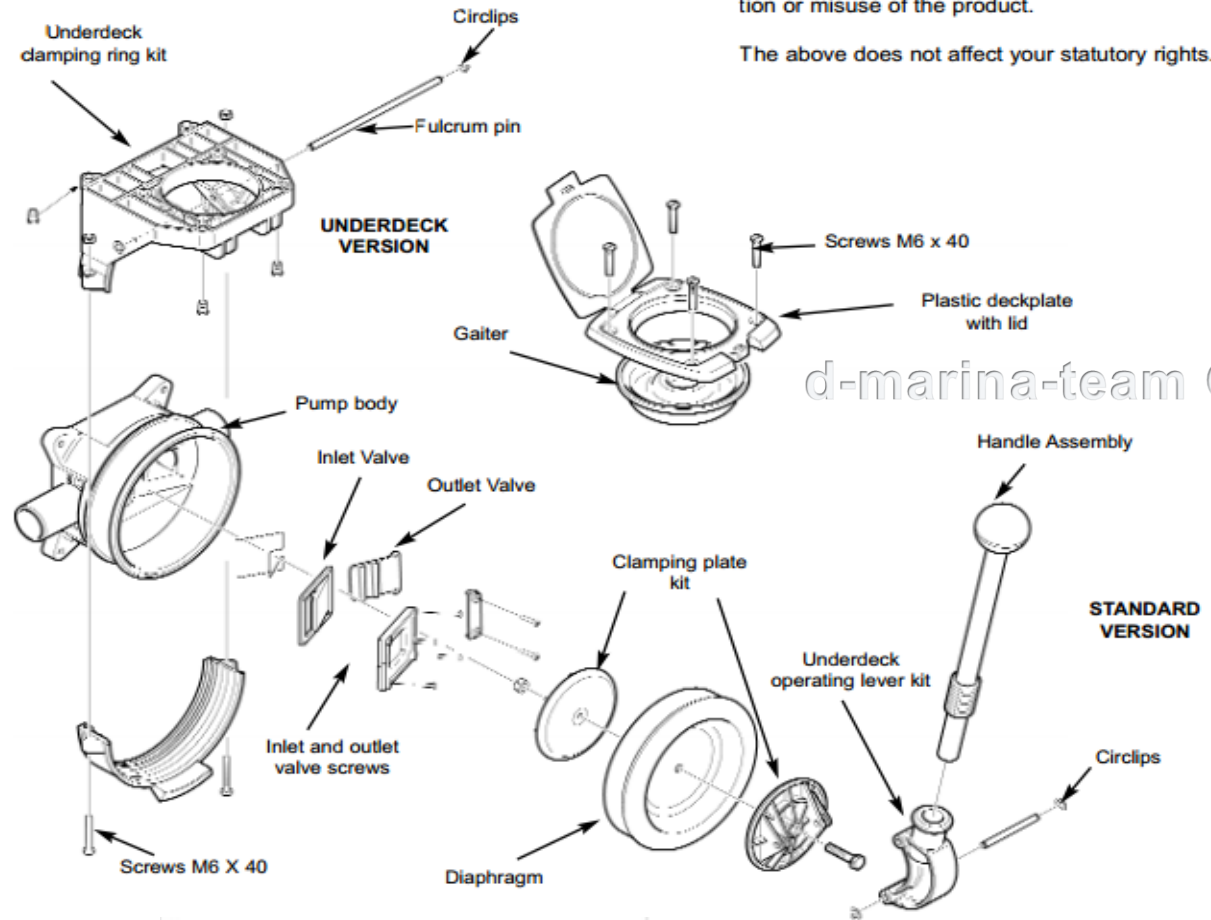
### HELPFUL HINTS

Pump fails to prime or chokes:

1. Check inlet hose connection is airtight, free from blockages and does not collapse during suction stroke
2. Inspect diaphragms - replace if damaged
3. Solid objects in the body of the pump may not prevent its operation but should be removed to prevent damage
4. Inspect inlet and outlet valves for blockages. Clear with finger or screwdriver and test.

d-marina-team GmbH

### MAINTENANCE LIST



## WARRANTY

Whale Pumps are guaranteed for 5 years (1 year on rubber parts) from date of purchase against defects in materials and workmanship. If the unit proves faulty return it to your supplier with proof of purchase and purchase date.

The manufacturer retains the right to repair or replace the unit.

The manufacturer cannot be held responsible for claims arising from the incorrect installation, unauthorised modification or misuse of the product.

The above does not affect your statutory rights.

d-marina-team GmbH

d-marina-team GmbH

