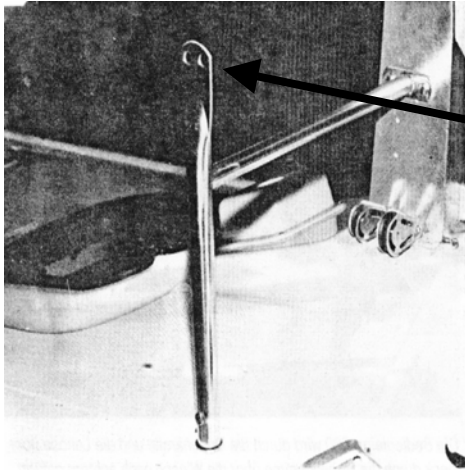
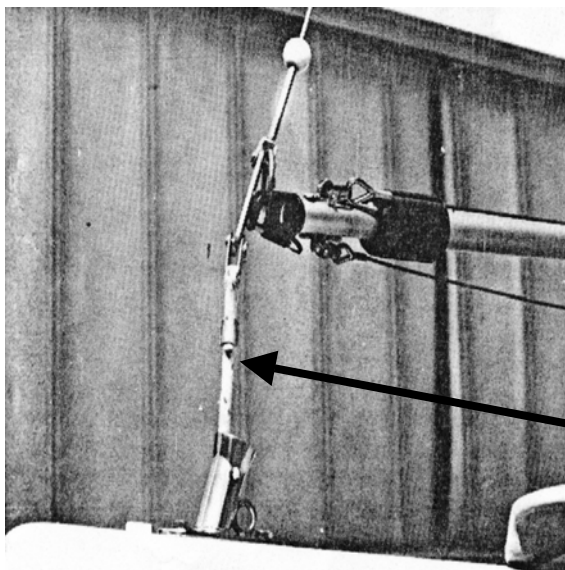
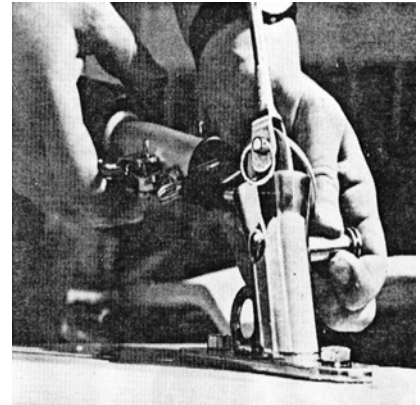


Jüttvorrichtung DY22/25



Drahtstopp für Telebaum hier anschlagen

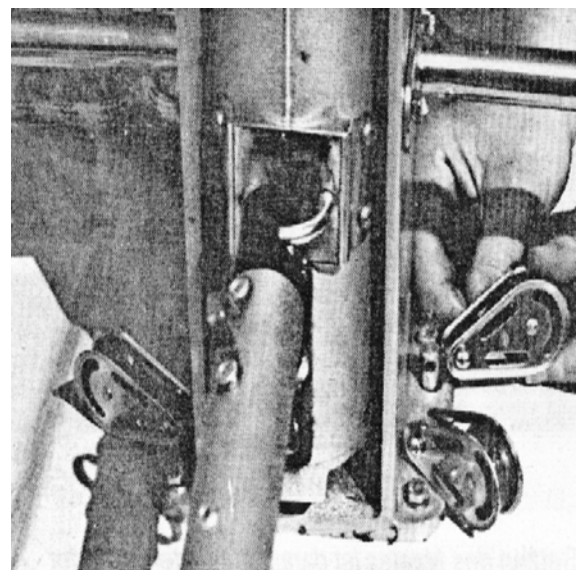
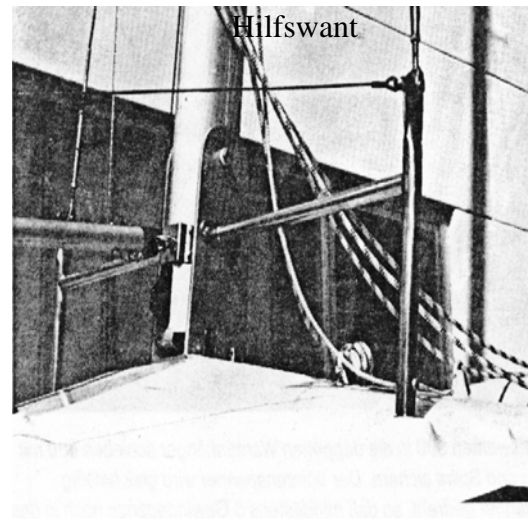
Telebaum am Ring anschlagen



Jüttleine mit Schäkel
Nr.19855 / Nr.11088

MARINA Großenbrode GmbH, von-Herwarth-Str. 37, 23775 Großenbrode; Tel.: 04367/8004, Fax:04367/8404
E-Mail: marina-grossenbrode@t-online.de, Internet: www.marina-grossenbrode.de

Jüttvorrichtung DY22/25

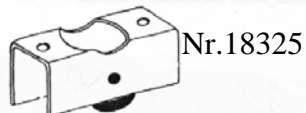
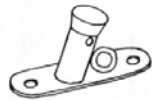


MARINA Großenbrode GmbH, von-Herwarth-Str. 37, 23775 Großenbrode; Tel.: 04367/8004, Fax:04367/8404
E-Mail: marina-grossenbrode@t-online.de, Internet: www.marina-grossenbrode.de

Jüttvorrichtung DY22/25

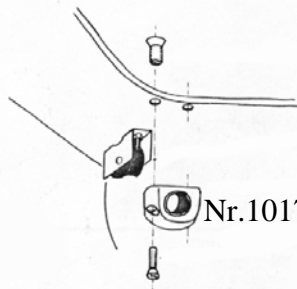


Umlenkrolle



Nr.18325

Leitöse im Ankerstauraum

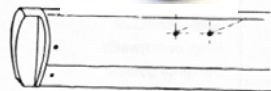


Nr.10170

Mastauge



Nr.18234



Jütt-Vorrichtung



Stehbolzen (Mastkoker) Nr.17124

Jüttleine Nr. 19855

Schäkel für die Jüttleine Nr.11088

Sechskantschraube M5x 16 Nr.14399

Ring für den Telebaum Nr.15220

Sechskantschraube 2x Nr.15398

S-Mutter 2x10255

Relingsbolzen 2x Nr.11117

Unterlegscheibe 2x Nr.14783

Kleber-Technicoll 1x Nr.11229